



WSPECW NEWSLETTER

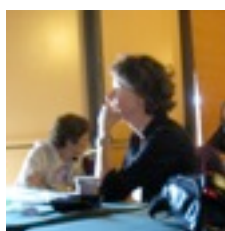
A BIENNIAL NEWSLETTER

FALL 2011

2011 Conference
Instant Messages?
Page 3



Conference Schedule
Make your plans
Page 5



Conference Registration
Asilomar, Nov. 17-20
Page 6



Retirees Column
Reunion info
Page 15



WSPECW Business
Member Directory info
Page 17



President's Message

We have two outstanding keynote speakers who are attending Western Society for the first time.

See You There !

**WSPECW 2011 Conference
November 17 - 20, 2011
Cambria Pines Lodge**

Hello Western Society! Now that summer is fading and fall is fast approaching I hope you are all ready for an exciting conference in Cambria in November.

This year's conference theme is:

Instant messages? Women's sport and physical activity in the face of new media.

Vikki Krane is a professor at Bowling Green State University in the School of Human Movement, Sport, and Leisure Studies and has served as Director of the Women's Studies Program. Her research and teaching interests focus on gender, heterosexism, and sport and are grounded in feminist cultural studies.

PRESIDENT'S MESSAGE *CONTINUED*

Nicole M. LaVoi is the Associate Director of the Tucker Center for Research on Girls & Women in Sport, Co-Coordinator of the Minnesota Youth Sport Research Consortium, and instructor in the area of Physical Activity Social & Behavioral Science at the University of Minnesota. Dr. LaVoi's multidisciplinary research includes influences from sport & exercise psychology, sport sociology, sport management, youth development, child development, moral development, and feminist studies.

I'm excited about our new venue for the conference, the Cambria Pines Lodge in Cambria, CA. We all love Asilomar, but I think this is going to be a great place for our conference. Look for more details about registration and accommodations in the newsletter. Your Conference Registration fee will include 3 Breakfasts, Coffee/Tea at breaks and the Banquet on Saturday night. We hope to start the conference with a group trip to Hearst Castle---thanks to Camille O'Bryant for arranging this outing. **Right now the trip is in "tentative" status due to the State of California budget cuts to state parks. We are waiting to hear about final arrangements from the site and will let people know via the list serv as soon as we have final information.** The only drawback is there is limited space on the tour. The first 50 conference registrants, who have paid their registration fee, will be able to "get on the bus!"

Unlike our recent conferences at Asilomar, you will be making your lodging arrangements directly with the Cambria Pines Lodge. Look for the conference registration information and accommodation information elsewhere in the newsletter.

Did your Department hire anyone new this year? (Somewhat of a dream in this economy, but we can all hope!) We can all make this the best conference in recent memory by bringing along a new colleague. The conference planning committee, led by Kerrie Kauer, has worked very hard to plan an interesting and fun weekend. Please feel free to contact me if you have any questions or comments about WSPECW or the upcoming conference.

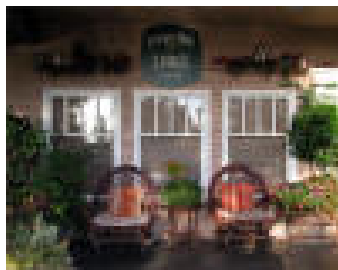
Alison Wrynn
(awrynn@csulb.edu)

Congratulations to

President-Elect Diane Higgs

Member-At-Large Lauren Morimoto

Honorary/Emeritae/Necrology Karen Johnson



WSPECW Annual Conference



Annual Conference: November 17-20, 2011

Cambria Pines Lodge

(<http://www.cambriapineslodge.com/>)

Cambria, California

Instant Messages? Women's sport and physical activity in the ace of new media.

Rapidly changing new media are impacting all facets of culture and society, including women's sport and physical activity. Explore with us how these new forms of representations will impact women's sport from a socio-cultural, psychological, and physiological framework.

Keynote Speakers

**Dr. Vikki Krane, Bowling Green State University
&
Dr. Nicole LaVoi, University of Minnesota**



2011 CONFERENCE SCHEDULE

Thursday November 17

- 12:00-1:15 Registration
- 1:15-2:25 Board meeting and Registration cont.
- 3:00** Meet for Hearst Castle Tour [FINAL DETAILS TBA]
- 3:30-7:15 Hearst Castle Tour [FINAL DETAILS TBA] and Dinner (in Cambria)
- 7:30-8:30 New Faculty Panel (Zanean)
- 8:30-9:00 Big Sis/Lil Sis and Kudos/ Social

Friday November 18

- 7:00-8:30 Breakfast
- 9:00-10:30 Scholarly Sessions
- 10:30-10:45 Break
- 10:45-11:45 Keynote
- 11:45-12:00 Kudos and Big Sis/Lil Sis
- 12:00-1:15 Lunch
- 1:15-2:45 Scholarly Sessions
- 2:45-3:00 Kudos and Big Sis/Lil Sis
- 3:00-4:45 Free Time/Gentle Movement Activity (?)
- 4:45-6:00 Happy Hour (Lounge area in Lodge)
- 6:00-7:30 Dinner
- 7:30-9:00 Film and Discuss + Social

Saturday November 19

- 7:00-8:30 Breakfast
- 9:00-10:30 Scholarly Sessions
- 10:30-10:45 Break
- 10:45-11:45 Keynote
- 11:45-12:00 Kudos and Big Sis/Lil Sis
- 12:00-1:15 Lunch
- 1:15-1:30 Kudos/Big Sis Lil Sis
- 1:30-2:30 Scholarly Sessions
- 2:30-3:45 Business meeting/Raffle/Group Picture
- 3:45-5:00 Free time
- 5:00-6:30 Happy Hour Social (Lounge are in Lodge)
- 6:30-7:30 Dinner
- 7:30-9:30 Banquet and Keynote + Social

Sunday November 20

- 7:30-8:30 Breakfast
- 8:30-10:00 Post-Conference Board Meeting

WSPECW CONFERENCE REGISTRATION INFORMATION

GENERAL INFORMATION:

The housing prices are provided for each room and will be booked directly through Cambria Pines Lodge. Meals begin with breakfast on Friday, November 18 and end with breakfast on Sunday, November 20th. You will be responsible for dinner on Thursday and Friday with convenient options off site or at the lodge. You will also be responsible for lunch on Friday and Saturday with options either off site or at the lodge. There are plenty of places in the area within a 5-10 minute walk, or 1 minute drive. Check-in time is 3pm Thursday November 17 and check-out time is 12 noon November 2. **Note:** Board members should request an early check in November 17th from 12-2:245.

EARLY BIRD REGISTRATION FOR PROFESSIONAL MEMBERS!

Register by **October 1st** and registration is \$185.00. After October 1st, the price of registration increases to \$200. **If we are still able to reserve the Hearst Castle Tour**, the *first 50* people to register for the conference will secure a spot for the Hearst Castle Tour. Please be checked in and ready to depart for Hearst Castle, Thursday, November 17th no later than **3:15 p.m.** Be sure to make your travel and transportation accordingly as you don't want to miss this exciting opportunity! Conference registration will include 3 breakfasts, coffee and tea, and the Banquet meal. Registration for graduate students is \$85. After October 1st, registration is \$200, so book early! Registration checks can be mailed to Martha Yates. **Important:** You will book your room directly through Cambria Pines Lodge (<http://www.cambriapineslodge.com/>). **You must book by October 17th**; Cambria Pines Lodge will release the room block and conference room rate after the 17th of October.

TRANSPORTATION:

Driving Directions

From Los Angeles and the south Take Highway 101 North to San Luis Obispo and take the Highway 1 North off-ramp. Cambria is just a 40-minute drive from San Luis Obispo up Highway 1 through Morro Bay. Continue on Highway 1, past the turnoff for Cambria village. At Burton Drive traffic lights make a right onto Burton Drive. Follow Burton Drive and Cambria Pines Lodge is on the left hand side at 2905 Burton Drive.

From San Francisco and the north Fast Option: Take Highway 101 South through Paso Robles, exit at Highway 46 West and travel West towards Cambria. At the Highway 1 intersection, turn right (to the North) and continue on Highway 1 past the turnoff for the village of Cambria (approximately 4 miles). At Burton Drive traffic lights make a right onto Burton Drive. Follow Burton Drive and Cambria Pines Lodge is on the left hand side at 2905 Burton Drive.

Big Sur Coast Scenic Option: Take Highway 1 South through "Big Sur" past Hearst Castle and San Simeon. Go past first traffic light in Cambria. At Burton Drive traffic light, make a left onto Burton Drive. Follow Burton Drive and Cambria Pines Lodge is on the left hand side at 2905 Burton Drive.

If flying: There are no convenient airports in the surrounding area of Cambria. If you are flying, please make your travel arrangements accordingly. Conference managers will not be available for pick up.

WSPECW 2011 CONFERENCE REGISTRATION FORM

Step 1: Contact Information

Last Name: _____	First Name: _____
Institution: _____	use this name on my badge: _____
Mailing Address: _____	City: _____ State: _____ Zip: _____
Phone: _____	Fax: _____ Email: _____

Step 2: Conference Fees

- Active/Associate/Allied (Early Bird before October 1st)
- Active/Associated/Allied (After October 1st)
- First time Attendee
- Graduate Student

Cost Summary

\$185	\$ _____
\$200	\$ _____
\$85	\$ _____
\$85	\$ _____

Step 3: Housing

Room rates will depend on type of room you request. All room reservations will be booked directly through Cambria Pines Lodge. (<http://www.cambriapineslodge.com/>)

Please be sure to book your room before October 17th to ensure Western Society Group Rates.

Step 4: Payment Information

Enclose a check(s) payable to WSPECW and mail to:

MARTHA YATES, TREASURER

4895 MEDICA RD.

SANTA ROSA, CA 95405

Payment must be received by **October 1st**

Rooms must be booked no later than **October 17th** with Cambria Pines Lodge

Contract Kerrie Kauer (kkauer@csulb.edu) for additional information.

See you at Cambria Pines!!



2010 Conference Attendees

WSPECW Needs You!

Greetings from Southern California! We are asking for your contributions to keep our organization strong and vibrant. This means submitting your work for presentations, volunteering to serve on committees, running for a board position, recruiting new members, hosting a social, and lots more...WSPECW needs you!! No contribution is too small or too big!

YOU are the strength of WSPECW!

Maybe you would like to get involved with conference planning or recruiting new members. This is a time when members – new and

veteran– can get involved and actively participate in the organization.

I would love the opportunity to speak to those of you who are interested in playing an active or formal role in WSPECW! Send me an email, call me on the telephone, send me a text message or come to Claremont! Here is my contact information – Ichase@csupomona.edu or 909-575-7027.

I look forward to hearing from you all very soon!

Laura Chase
WSPECW, President – Elect

WSPECW 2010



Award Recipients

Congratulations to 2010 Award Recipients

President's Scholarships:

Lara Killick, University of the Pacific

Claire Williams, St. Mary's University

Professional Development Award:

MARIA VERI, San Francisco State University

For more information about WSPECW Awards, visit our web site: <http://www.wspecw.org>

Western Society for Physical Education of College Women



PROFESSIONAL AWARDS & CALL FOR PROPOSALS

2011 ANNUAL CONFERENCE

November 2011

Cambria Pines Lodge

Cambria, California

Instructions for:

- ***Emerging Professional Award***
- ***President's Educational Equity Scholarship***
- ***Professional Development Award***
- ***Call for Proposals***

For additional information, please visit the WSPECW website:

<http://www.wspecw.org>



2011 Emerging Professional Award

PURPOSE:

The purpose of the Emerging Professional Award is to encourage professional involvement in WSPECW, stimulate growth and networking through the interaction inherent in this involvement, and acknowledge emerging professionals in higher education. Award recipients must be current members of WSPECW.

NOMINATIONS:

If you know someone at your institution or one near you who is a qualified candidate for this award please submit a nomination letter and copy of the nominee's resume or curriculum vitae.

The Professional Outreach committee will choose recipients based on such criteria as excellence in teaching, creativity, and professional contribution. There will be a monetary award and, for first time attendees, a waiver of conference fees.

Nominating someone for this award is an important step in supporting new members of the professoriate (community and/or four- year colleges) and supporting the existence and growth of WSPECW.

Nomination Deadline-September 15, 2011

SUBMIT TO:

Ann F. Maliszewski
 Biological Sciences
 Cuesta College,
 P.O. Box 8106, San Luis Obispo, CA 93403-8106.
 Phone: (805)546-3100 Ext. 2104.
 Email: amalisze@cuesta.edu

* PLEASE TYPE "WESTERN SOCIETY" IN THE SUBJECT HEADING OF YOUR EMAIL.
 You will receive a confirmation email upon receipt. If you do not receive a confirmation, please re-submit and/or leave a voice mail message at the phone number above.

President's Educational Equity Scholarship

It is time to select a 2011 President's Educational Equity Scholarship winner. WSPECW Members, please help us recruit qualified applicants by encouraging women of color pursuing graduate degrees in Physical Education or Kinesiology to apply.

PURPOSE: The President's Educational Equity Scholarship (PEES) is designed to recognize outstanding women of color pursuing graduate degrees in Physical Education/ Kinesiology. The scholarship is awarded each fall, and recipients are invited to the annual conference. Recipients will receive a \$500.00 scholarship and conference registration fee and board during their award year.

SCHOLARSHIP CRITERIA: Review the following criteria for applicants and invite those graduate students you know of or work with who may meet these modest criteria. Nominees must submit a copy of their resume and a letter of application outlining their qualifications and interest in the award.

- Current member of Western Society.
- Women of color pursuing graduate work in the field of Physical Education or Kinesiology.
- Past record and future academic promise.
- Past record and future promise as a contributing the professional in Physical Education/ Kinesiology.
- Past record and future promise of benefiting their communities or society
- Need (award intended in part to provide extra funds that will make a significant difference in completion of the graduate degree).
- Residence (the recipient must be pursuing a degree at OR a prior degree must have been received from an institution within Western Society's region).

Application Deadline - September 15, 2011

SUBMIT TO:

Ann F. Maliszewski
 Biological Sciences
 Cuesta College,
 P.O. Box 8106, San Luis Obispo, CA 93403-8106.
 Phone: (805)546-3100 Ext. 2104.
 Email: amalisze@cuesta.edu

* PLEASE TYPE "WESTERN SOCIETY" IN THE SUBJECT HEADING OF YOUR EMAIL.
 You will receive a confirmation email upon receipt. If you do not receive a confirmation, please re-submit and/or leave a voice mail message at the phone number above.



Professional Development Award

PURPOSE:

Each year a deserving active or temporary member of WSPECW is eligible to receive the Professional Development Award to promote her professional work. Proposals for this monetary award may include, but are not limited to, the following:

- The development of new, innovative, teaching or coaching related materials
- Research projects
- Development of professionally related computer software
- Attendance at a special workshop or symposium

INSTRUCTIONS:

Submit your proposal for the *Professional Development Award* in the following format:

- A cover page that includes the principal investigator's name, academic rank, or status, and professional address (graduate students should also identify the major professor).
- A detailed description of the activity of project for which funding is being requested (not to exceed five typewritten, double-spaced pages).
- Proposed budget
- A description of the specific ways that the proposed activity or project will contribute to the principal investigators professional development (not to exceed two typewritten, double-spaced pages).
- Identification of other available funding or requested funding for the proposed activity or project.
- Proposed timelines for the activity or project. (Normally, completion of the activity or project should occur within one year of notification of funding).
- Submission of one to three letters of support is optional. However, graduate students MUST include a letter of support from their major professor.
- Curriculum vitae of the principal investigator.

NOTE: Recipients of the Professional Development Award should plan to attend and present the results of their work at the WSPECW Conference the year immediately following receipt of this award. Award recipients must be current members of WSPECW.

Application Deadline - September 15, 2011

SUBMIT TO:

Ann F. Maliszewski
 Biological Sciences
 Cuesta College,
 P.O. Box 8106, San Luis Obispo, CA 93403-8106.
 Phone: (805)546-3100 Ext. 2104.
 Email: amalisze@cuesta.edu

* PLEASE TYPE "WESTERN SOCIETY" IN THE SUBJECT HEADING OF YOUR EMAIL. You will receive a confirmation email upon receipt. If you do not receive a confirmation, please re-submit and/or leave a voice mail message at the phone number above.

CALL FOR PRESENTATION PROPOSALS



2011 Annual WSPECW Conference

PURPOSE:

Professionals from a variety of academic disciplines examining issues and concerns relevant to physical education and kinesiology are encouraged to share their expertise and interests at the 2011 WSPECW Conference at Cambria Pines Lodge, Cambria, CA. You may do so by submitting a proposal abstract (details below). Proposals may include original data-based research, scholarly inquiries, theoretical examinations, teaching strategies, or other creative contributions. Completed projects or works-in-progress are acceptable.

There are many advantages to presenting your work at WSPECW:

- WSPECW is a regional conference (higher status than State)
- Waiver of registration fees for first-time conferees
- Peer-reviewed selection - all proposals are reviewed by a team of professionals
- Option to request a peer-evaluation of your conference presentation
- Multidisciplinary audience encourages sharing of collective knowledge
- Excellent opportunity for graduate students to share their work
- Great mentoring and networking opportunities
- President's scholarships available to WSPECW faculty to defray conference expenses

INSTRUCTIONS:

We offer two formats to present your work: as a traditional oral presentation or within a poster session. *Research proposals* should include (1) Study title, (2) *author(s) and institutional affiliation* (co-authors should include only those who contributed significantly to the research), (3) the *hypothesis*, (4) *methodology*, (5) *results*, and (6) brief *discussion*. If the data have not been analyzed you may discuss preliminary findings. *Scholarly and creative proposals* should include (1) Project title, (2) *author(s) and institutional affiliation*, (3) *purpose*, (4) *content* and (5) *mode of presentation*, and (6) brief *discussion* of expected outcomes. Please note your format (oral or poster) when submitting your proposal so that we can best accommodate you. All presentations are to be 20 minutes in length. *All proposal abstracts should be in the form of an abstract limited to 250 words, using Times New Roman font size 12, and single-spaced.*

Submission Deadline-September 15, 2011

SUBMIT TO:

Ann F. Maliszewski

Biological Sciences, Cuesta College, P.O. Box 8106, San Luis Obispo, CA 93403-8106.
Phone: (805)546-3100 Ext. 2104. Email: amalisze@cuesta.edu

* PLEASE TYPE "WESTERN SOCIETY" IN THE SUBJECT HEADING OF YOUR EMAIL.
You will receive a confirmation email upon receipt. If you do not receive a confirmation, please re-submit and/or leave a voice mail message at the phone number above.



2011 Reunion at Cambria Pines

GREETINGS TO ALL
WESTERN SOCIETY
HONORARY AND
EMERITI MEMBERS!!

It's time to begin planning for our next special reunion—this is our third one!! Palm Springs in 2008, MONTEREY/ASILOMAR IN 2010!! And now our third one in CAMBRIA, CALIFORNIA—in the heart of the central coast!!

We are excited about our new venue for the conference — the Cambria Pines Lodge!

Lodging arrangements will be made by you directly with the Lodge and you will be able to stay in the same room throughout the reunion and the conference. The reunion will begin on Wednesday, November 16, 2011 with dinner at one of the many delightful restaurants in Cambria. Registration details will be included in the Fall Newsletter—BUT MARK YOUR CALENDARS NOW!

This will be the social for those of you who say you

don't come anymore because you don't know anyone--- WELL, YOU KNOW THIS GROUP!!

Thursday activities could include golf at the Morro Bay Golf Course for those who still swing, shopping in Cambria (there are many charming shops!) for those who want to help the economy, driving north on Highway One to view the amazing elephant seals and enjoy great views of the Pacific Ocean (and maybe

Reunion!

the Pacific Ocean (and maybe lunch at Ragged Point!) and for those exercise folks, walking or jogging along the boardwalk at Moonstone Beach (there's a good lunch place there too!). For those who just want to hang out, Cambria Pines Lodge is situated on beautiful grounds suitable for strolling or relaxing in the gardens!

Something for everyone! And if you can't come, send photos and an update on your recent activities! Of course, we hope that you will stay for the conference, but no pressure!! Then you can meet some of those youngsters who are doing a great job of carrying on Western Society. They really do want to meet you as the legends of their time, just as we wanted to meet the legends of our time! And did I mention that this is going to

be a really great conference?! Well, it is!! The conference theme is:

“Instant Messages? Women’s Sport and physical activity in the FACE of new media.”

“Rapidly changing new media are impacting all facets of culture and society, including women’s sport and physical activity. Explore with us how these new forms of representations will impact women’s sport from a socio-cultural, psychological, and physiological framework.”

Our previous reunions have produced great memories and current good times—it felt so good to see “OLD” friends and catch up with all the mischief that you have been getting into!

Any suggestions for any part of this event are welcome!

Please contact Joan Johnson, 3341 Balzac Street, Alhambra, CA 91803; or phone 323-221-1206; or email jdjohnson01@earthlink.net

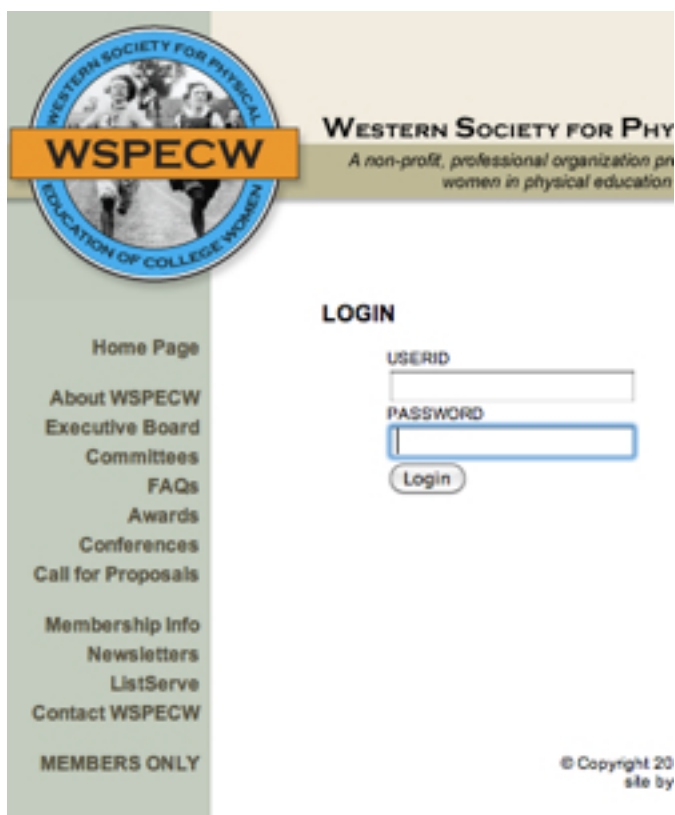
I’m sending this by regular mail to all honorary and emeriti members because I missed the deadline for the Spring Newsletter. If you have an email address and prefer to receive WS information through that avenue, please send your email address to me.

P.S. Cambria is quite close to the Hearst Castle. Conference planning committee has included a bus trip to visit, but if you are averse to buses, we could try to make other arrangements.

Announcing the WSPECW On Line Directory

WSPECW now has an on line directory that is accessible through the our website. Go to the website <http://www.wspecw.org> and look for the MEMBERS ONLY link.

You will need to know the userid and password. These will be sent to you in the email that accompanies the Spring Newsletter. At any time you can contact ellen.carlton@sonoma.edu for the userid and password.



The screenshot displays the WSPECW website interface. On the left is a vertical navigation menu with the following items: Home Page, About WSPECW, Executive Board, Committees, FAQs, Awards, Conferences, Call for Proposals, Membership Info, Newsletters, ListServe, Contact WSPECW, and MEMBERS ONLY. The main content area features the WSPECW logo (a circular emblem with the text 'WESTERN SOCIETY FOR PHYSICAL EDUCATION OF COLLEGE WOMEN' and 'WSPECW' in a central orange banner) and the text 'WESTERN SOCIETY FOR PHY' followed by the tagline 'A non-profit, professional organization pr women in physical education'. Below this is a 'LOGIN' section with two input fields labeled 'USERID' and 'PASSWORD', and a 'Login' button. At the bottom right, there is a copyright notice: '© Copyright 20 site by'.

2010 Donors to WSPECW

During 2009 the following made contributions totaling over \$1,100. Many thanks to all our donors.

Terry Coblentz	Janie Threadgold	Bev Johnson
Karen Johnson	Jeannette Williams	Vivian Fritz
Camille O'Bryant	Bobbie Bennett	Eula West
Joan Johnson	Geri Shepard	Mary Mott
Rita Liberti	Katherine Jamieson	Jo Zwanzinger
Gail Evans	Mary Ruby	

In addition, many donated to WS by their participation in the conference raffle. The donation of raffle prizes and the purchase of raffle tickets resulted in over \$1,000 for the Professional Development fund.

Donations may be made at any time to the General Fund or to specific funds, including Presidential Scholarships, Memorial Fund, Historical Records, Professional Development, Equity Action, Emerging Professional.

Checks should be made payable to WSPECW and mailed to:

**Martha Yates, Treasurer
4895 Medica Rd.
Santa Rosa, CA 95405**

Western Society for Physical Education of College Women



NOMINATIONS FOR HONORARY MEMBERSHIP

Honorary memberships shall be given to women who have been members of the Society for a period of at least eight to ten years immediately prior to retirement from teaching or administration in physical education, and who have given outstanding service to the Society.

Criteria:

1. Elective office or member of the Executive Board.
2. Member or Chair of committees.
3. Participant on conference programs (panel member, speaker).

If you have a candidate to nominate, please forward the following information to:

Joan Johnson, 3341 Balzac Street, Alhambra, CA 91803; jdjohnson01@earthlink.net

Name of nominee _____

Institution at the time of retirement _____

Date of retirement _____

Your name _____

Your address _____

The nomination should describe how the nominee meets the criteria (include a resume' if possible).

Nominations for Honorary Membership are DUE BY SEPTEMBER 15, 2011

Western Society for Physical Education of College Women



NECROLOGY NOTICE

If you know of recently deceased WSPECW members, please complete the following and send to:

Joan Johnson, 3341 Balzac Street, Alhambra, CA 91803; jdjohnson01@earthlink.net

Your name _____

Your address _____

Name of Deceased _____

Most recent institutional affiliation _____

Name and address of person who could write a memorial statement:

Name _____

Address _____
